

Write in words what each of the following symbols means. Then draw an example for each.

1. Q

2. \overline{MN}

3. \overrightarrow{ST}

4. \overleftrightarrow{FG}

In Exercises 5-9, use the diagram.

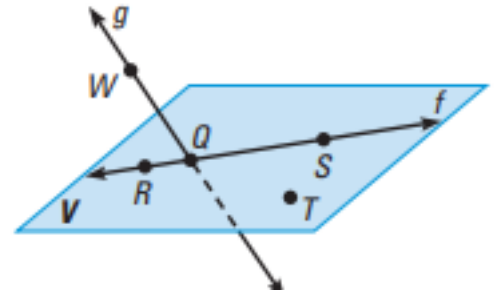
5. Give other names for \overleftrightarrow{WQ}

6. Give another name for plane V

7. Name three points that are collinear. Then name a fourth point that is not collinear with these three points.

8. Name a point that is not coplanar with R, S, and T.

9. Is point W coplanar with points Q and R?



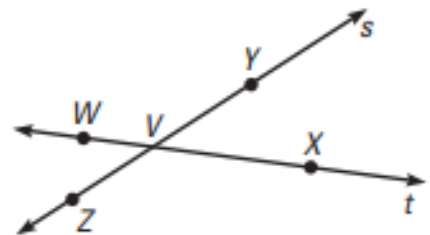
In Exercise 10-14, use the diagram.

10. What is another name for \overleftrightarrow{ZY} ?

11. Name all rays with endpoint V.

12. Name two pairs of opposite rays.

13. Give another name for \overleftrightarrow{WV}



14. A student says that \overleftrightarrow{VW} and \overleftrightarrow{VZ} are opposite rays because they have the same endpoint. Describe the error.

15. What statement about the diagram is true?

- A. A, B and C are collinear
- B. C, D, E and G are coplanar
- C. B lies on \overleftrightarrow{GE}
- D. \overleftrightarrow{EF} and \overleftrightarrow{ED} are opposite rays



Sketch the figure described – try your best. ☺

16. Three lines that lie in a plane and intersect at one point

17. One line that lies in a plane and one line that does not lie in the plane.

18. Line AB and line CD intersect at point E, with point E between A and B and between C and D. Which rays are opposite rays?

A. \overrightarrow{EC} and \overrightarrow{ED}

B. \overrightarrow{CE} and \overrightarrow{DE}

C. \overrightarrow{AB} and \overrightarrow{BA}

D. \overrightarrow{AE} and \overrightarrow{BE}

In Exercises 19- 24, use the diagram.

19. Name the intersection of \overleftrightarrow{PR} and \overleftrightarrow{HR}

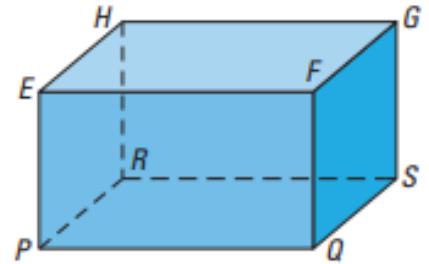
20. Name the intersection of plane EFG and plane FGS.

21. Name the intersection of plane PQS and plane HGS.

22. Are points P, Q and F collinear? Are they coplanar?

23. Are point P and G collinear? Are they coplanar?

24. Name three planes that intersect at point E.



Graph the inequality on a number line. Tell whether the graph is a segment, a ray or rays, a point or a line.

25. $x \leq 3$

26. $x \geq -1$ or $x \leq 5$

27. $-7 \leq x \leq 4$