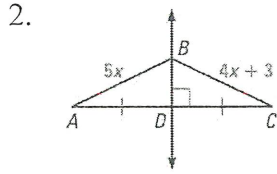


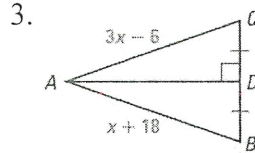
1. Suppose you draw a circle with a compass. You choose three points on the circle to use as vertices of a triangle.

The center of the circle is also called the Circumcenter of the triangle.

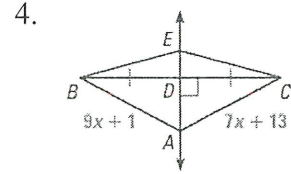
Find the length of \overline{AB} .



$AB = 15$ units

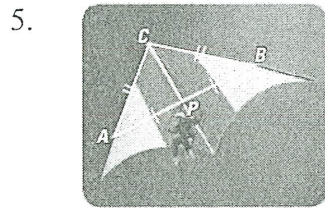


$AB = 30$ units

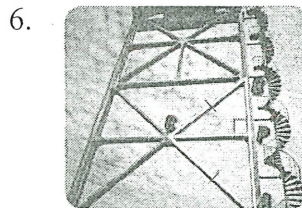


$AB = 55$ units

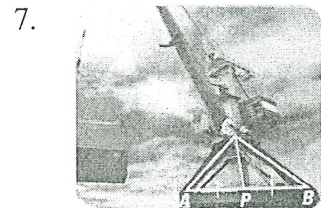
Tell whether the information in the diagram allows you to conclude that C is on the perpendicular bisector of \overline{AB} . Justify your conclusion.



Yes; Justify



Yes; Justify



No; Justify

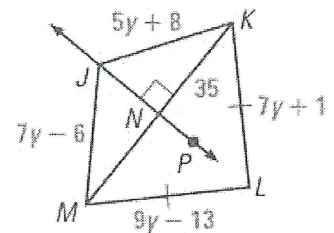
\overline{JN} is the perpendicular bisector of \overline{MK} .

8. Find NM

$NM = 35$ units

9. Find JK

$JK = 43$ units



10. Find KL

$KL = 50$ units

11. Find ML

$ML = 50$ units

12. Is L on \overline{JP} ? Explain.

Yes; Justify

